

Manual for Solecheck

Please kindly read this manual carefully before using Solecheck.



**** Table of Contents ****

<i>Before Use</i> -----	3
<i>Guarantee & Responsibility</i> -----	4
<Modular Mat Installation>	
<i>Slope Type Installation</i> -----	5
<i>Long Slope Type Installation</i> -----	6
<i>Cover Type Installation</i> -----	7
<i>Embedded Type Installation</i> -----	8
<i>Air Shower Type Installation</i> -----	9
<Dust Collector Installation>	
<i>104A Type Installation</i> -----	11
<i>104(M) Type Installation</i> -----	12
<i>105 Type Installation</i> -----	13
<Filter Exchange>	
<i>Exchange Suction Pin</i> -----	14
<i>104 Exchange Dust Tray & Filters</i> ---	16
<i>105 Exchange Dust Tray & Filters</i> ---	18
<i>Notices for Wheel usage</i> -----	19
<i>104 type Exchange Filter Checklist</i> ---	20
<i>105 type Exchange Filter Checklist</i> ---	21

Before Use

This notice is to protect user from an unexpected danger and damage while using this equipment.

Warning :

User may risk serious injury or death if not operating according to instruction

Notice :

User may risk injury or damage if not operating according to instruction

Warning

- A. *Do not disassemble or remodel without an expert repair engineer.*
- B. *Do not spray flammable materials including Gasoline, Thinner, etc. around the equipment*
- C. *Do not clean and wash this equipment by water.*
- D. *Do use Socket over 15A separately.*
- E. *Please make sure the power cord is not pressed by heavy object and is not touched by sharp edge.*
- F. *Turn off power in advance definitely when the plug is put in or pull out a socket.*

Notice

Do not use this equipment in case of below .

- A. *This equipment do not operate under switch-on.*
- B. *The power is on or off repeatedly when power plug or power code is moved.*
- C. *This equipment is suddenly stopped sometimes while operating.*
- D. *An abnormal or strange sound like a noise happens while operating.*
- E. *The body of The Dust Collector is getting hot abnormally.*
- F. *The hose is damaged.*
- G. *There is a smell of burning.*



Guarantee & Responsibility

Guarantee period is 1 year as from On-Board date of shipment.

Damage caused by Design and Production within guarantee period can be serviced as free of charge.

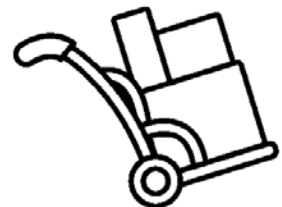
Damage caused by customer of wrong operation within guarantee period will be serviced as Charge.

Following our company policy, our products are packed as safely and properly as possible when We ship the goods.

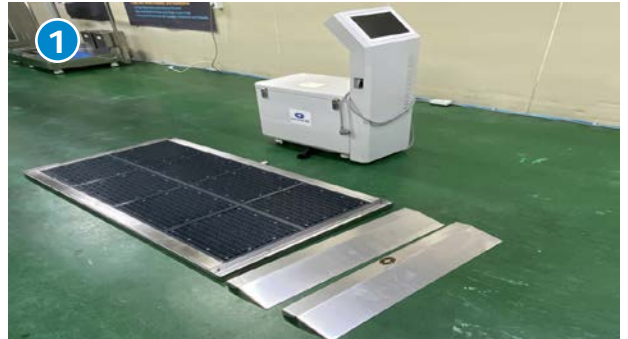
Therefore, when you receive the damaged products which happened during shipment, we have no Responsibility of the reimbursement or replace of the products.

We have no responsibility either of the reimbursement or replace of the products, when the product damaged by the unexpected natural disaster including thunderstorm, fire, flood, earthquake, etc. which happened during shipment.

Responsibility for damaged happened during shipment is on the forwarder company.



Slope Type Installation



Place the Dust Collector, Slopes and Mat.

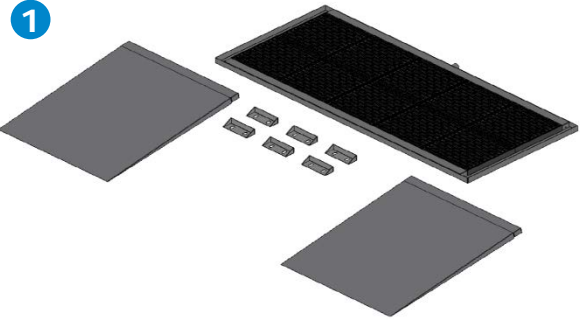


Connect Hose to the Mat.

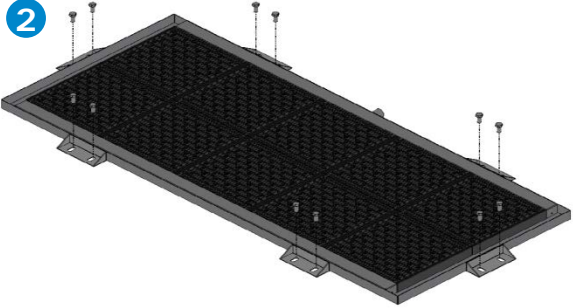


Put both slopes. Finish

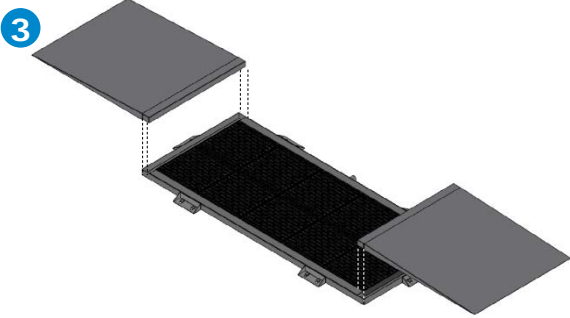
Long Slope Type Installation



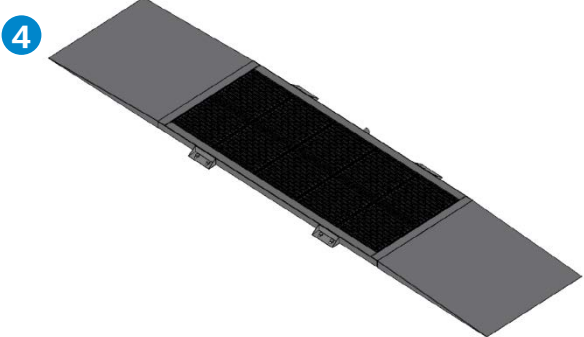
Place the product. (Mat, Long Slope, Fixing Bracket)



Fix the fixing bracket to the floor with bolts.

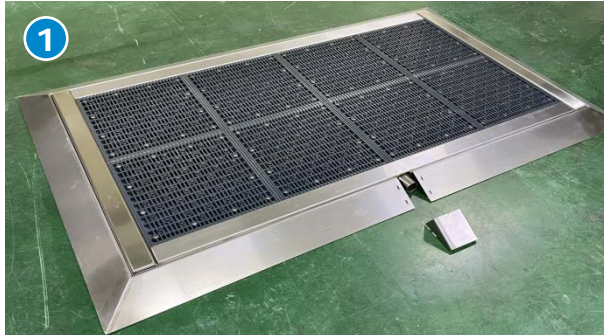


Put both slopes on the mat.



Connect the dust collector hose to the mat. Finish

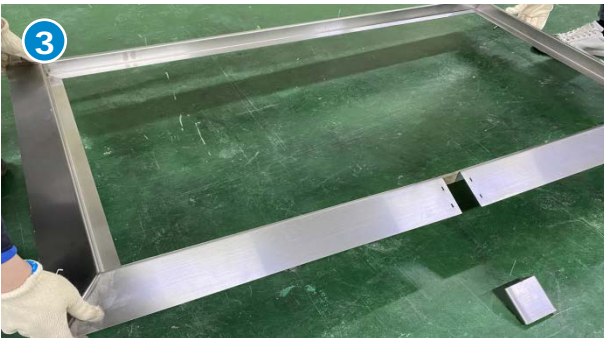
Cover Type Installation



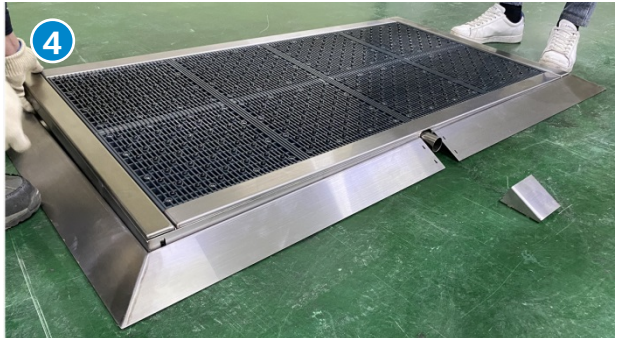
1
Unpack.



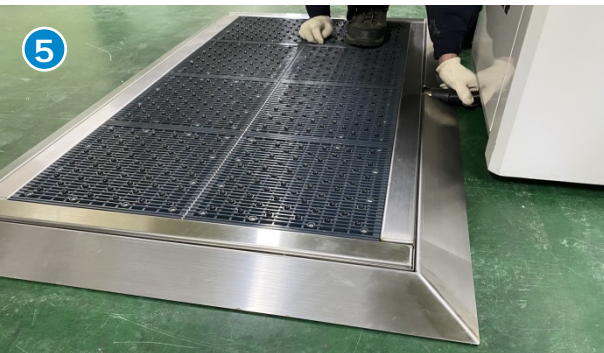
2
Lift both mats with provided hooks to separate mats.



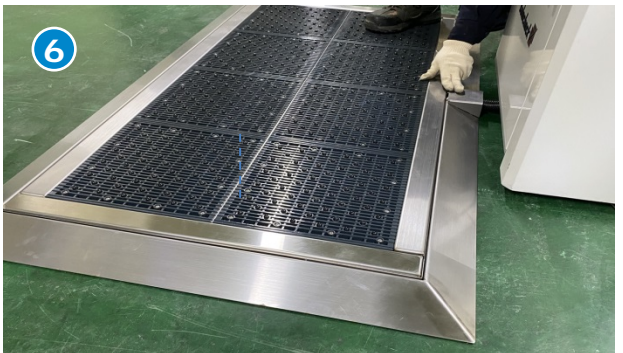
3
Place the Cover Slope where you want.



4
Put the mat back on the Cover Slope .

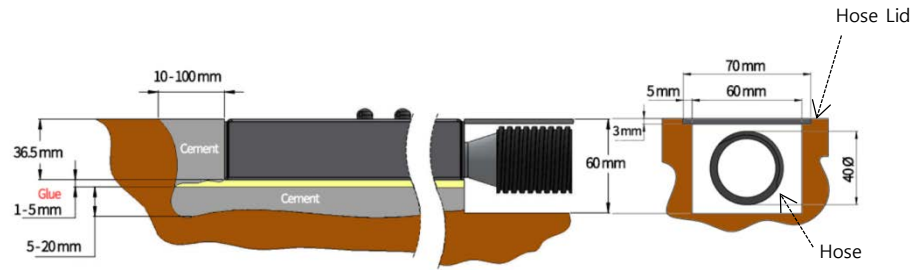


5
Connect the hose and mat.

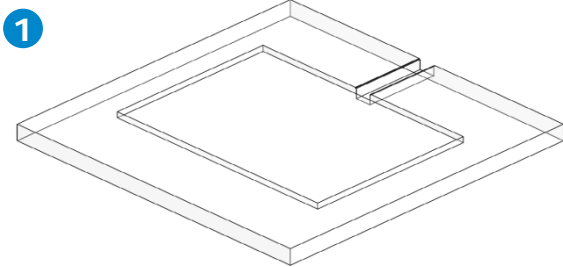


6
Cover the hose lid. Finish

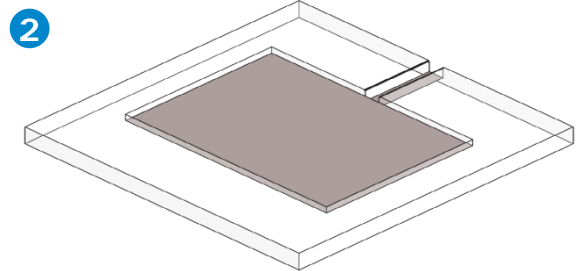
Embedded Type Installation



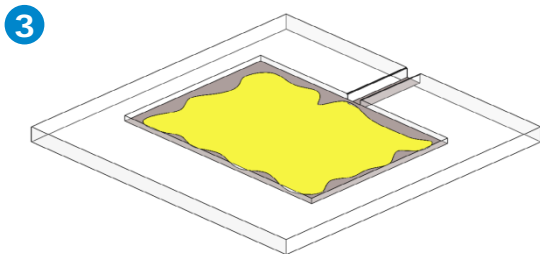
Please refer to the Mat drawing suggested for the number of modules.
Check the construction of the hose part and the hose lid part.



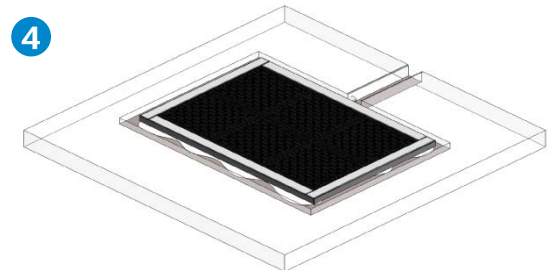
Dig the ground according to the drawings.



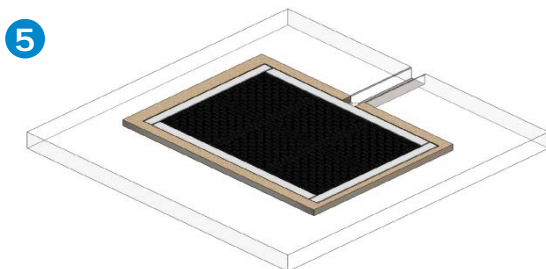
Make the ground level and even. Dry it for one day.



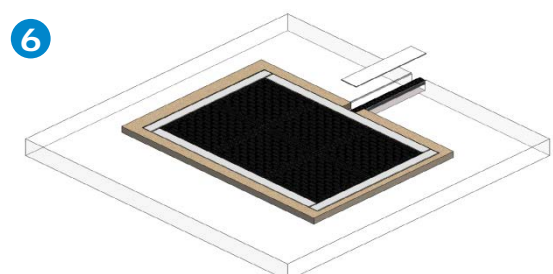
Apply the adhesive evenly to the area where the mat will be seated.



Put the mat as it is.



Finish the sides of the mat with cement.

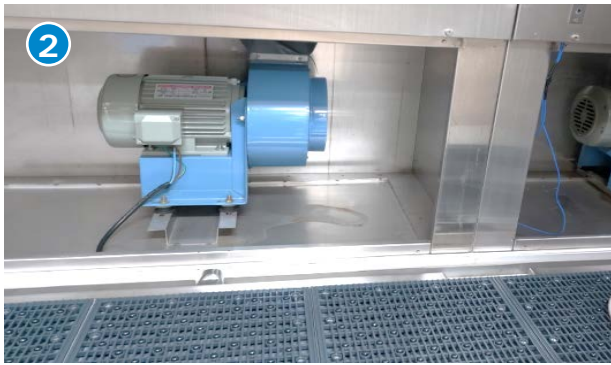


After connecting the hose, close the lake lid. Finish.

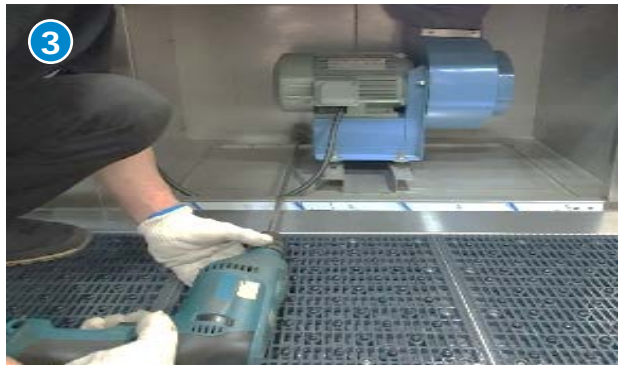
Air Shower Type Installation



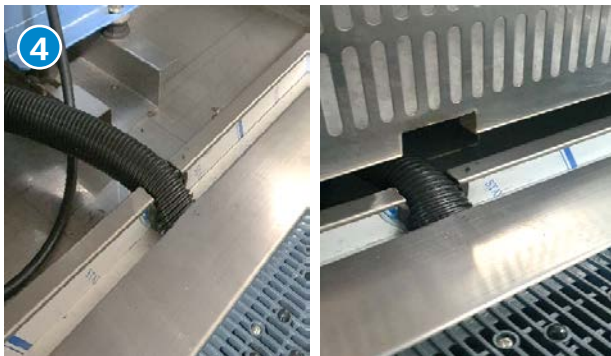
Open the Air Shower Filter Cover.



Put Solecheck on the Air Shower bottom as it is.



Make hole (Approx. 45 Ø) at the outer of Air Shower, where to put Dust Collector.



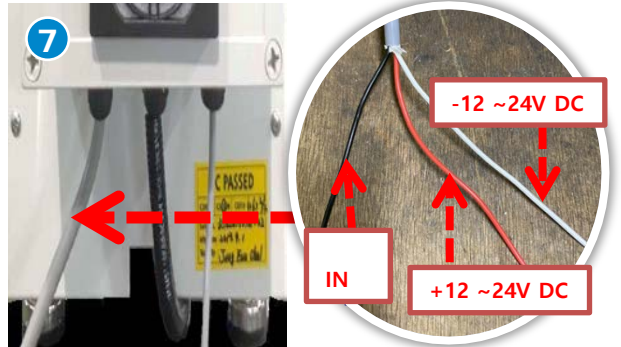
Make hole at the Air Shower Filter Cover. (Hose outer size 40 Ø)
Link the hose into the hole of mat.



Tighten the hose with joint.



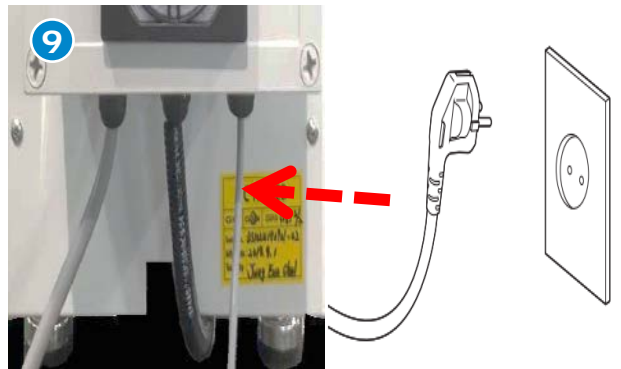
Place Dust Collector at the outside of Air Shower. Fix the wheels.



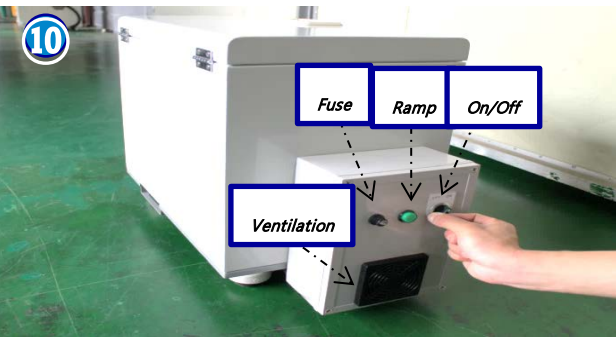
Link together wires of Control Box with wires of Air Shower. Solecheck will operate as long as Air Shower operates.



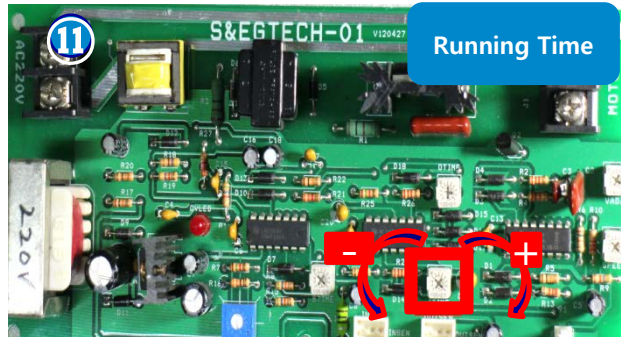
Put silicon at the edge of mat.



Link Power cord of Dust Collector. (220V 50/60Hz)

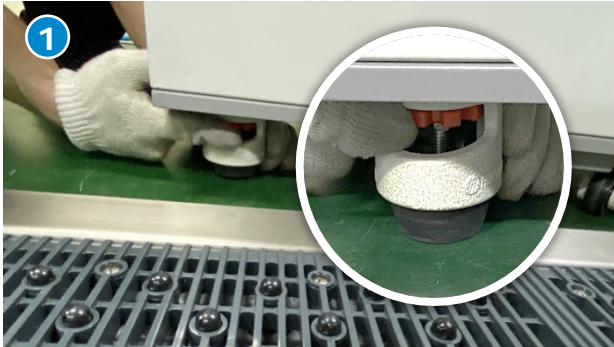


Switch on at the Control Box.

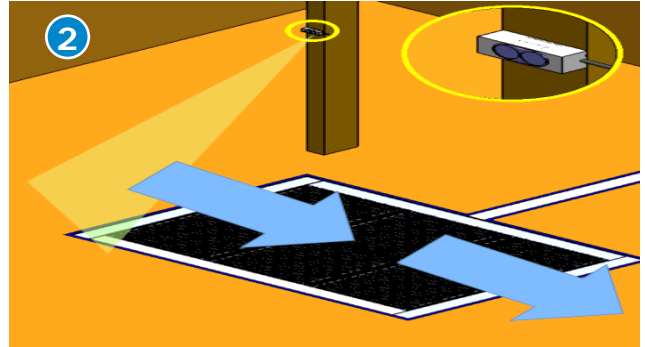


If you want Solecheck will operate longer than Air Shower operation, turn the "itime" right direction (+) at the Control Box.

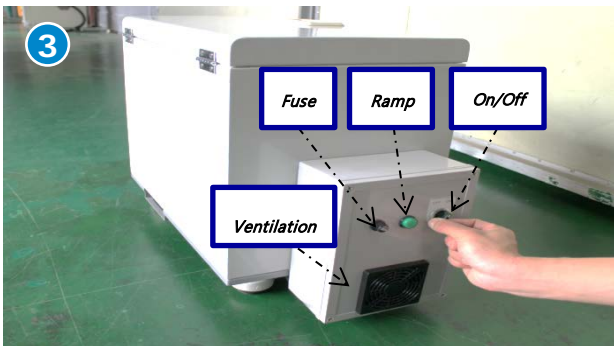
104A Type Dust Collector Installation



Fix Dust Collector's 4 wheels.



Install Sensor 'before' the Suction Mat. Connect the power cord.



Turn on power at Control Box.



Set the Sensor Detection Range.

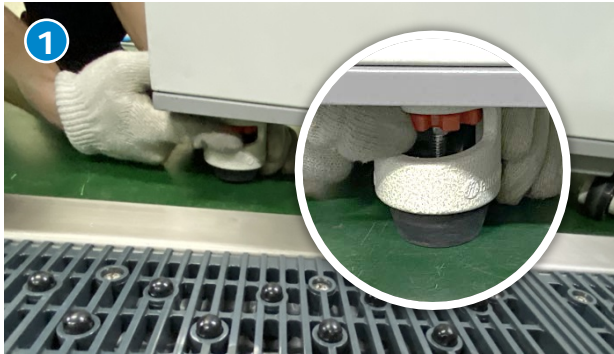


Running time is 5 mins. If you want to change, loosen 4 volts.

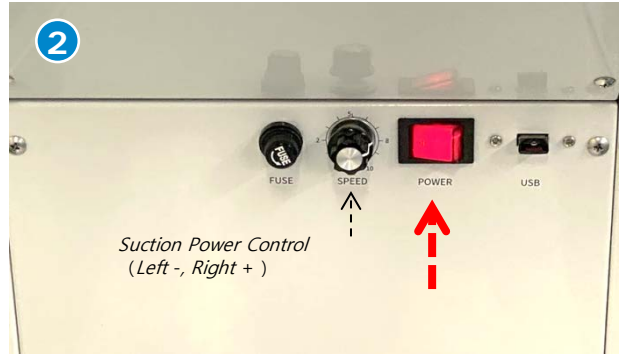


Set the Running Time. (Normally 5 sec.) (min.1 ~ max. 23 sec.)

104(M) Type Dust Collector Installation



Fix 4 wheels.



Connect the power cord and turn on power.



Set the sensor angle by turning left and right according to the site.



Set the sensor range according to the site. (Range : 0m-2m)



Set running time is 5 mins. If you want to change, loosen 4 volts.

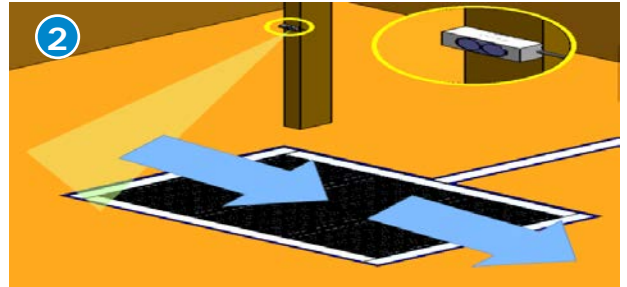


Set the "iTime". (min.1 ~ max. 23 sec.)

105 Type Dust Collector Installation



Fix the wheels to place the dust collection box.



Fix the sensor connected to the control box "before" the door or the wall/shelf.



After connecting the power cord, adjust the sensor range according to the installation site (maximum 2m).



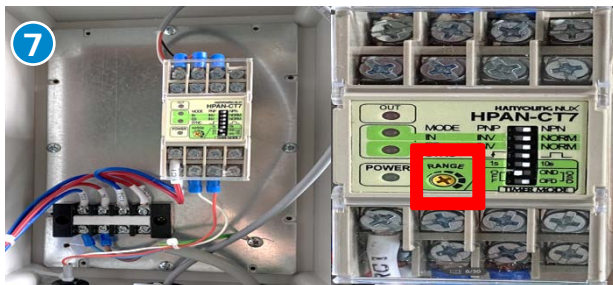
Make sure the cyclone dust tray is closed.



Turn ON in the control box. Finish.



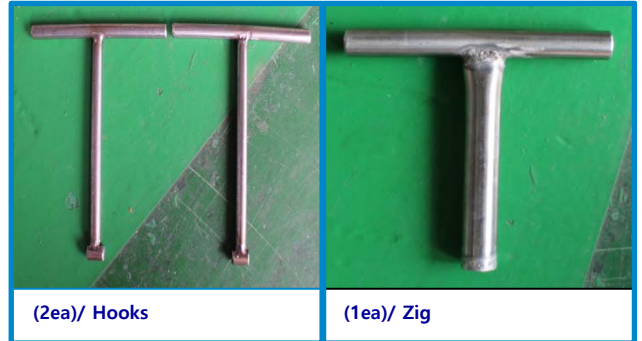
If you want to change the suction time, turn off the power and open the control box.



Set the Running Time. At Range (min.1 ~ max. 10 sec.)

Exchange Suction Pin

When Pin is broken, suction power become weaken and noise occurred.



Prepare : Hook(2ea), Zig(1ea), Cross (+)Screw Driver, and New Pin



Loosen volts in the Modular Cell with Cross(+) Screw Driver.



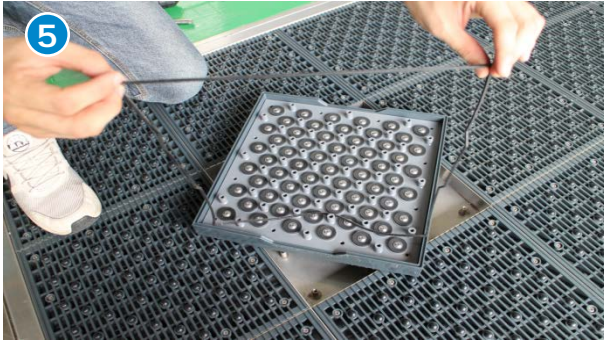
Insert the hooks(2ea) at the each edge of Modular Cell, and lift it up.



Fix the Pin with Zig, and loosen it with Cross(+) Screw Driver.



Exchange it with new pin.



Put the used Square Rubber back into the hole of Modular Cell.



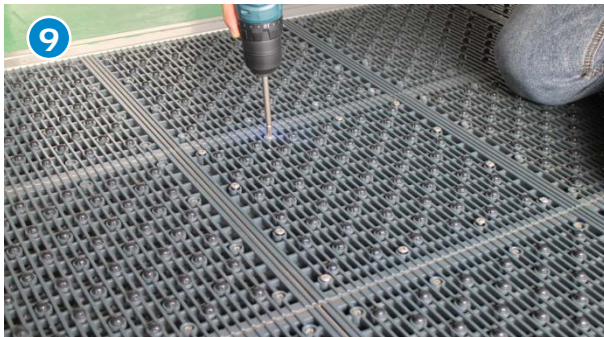
Push enough not to fall off.



Match and place the red lines with the hole.



Put it back as it is.



Tighten the bolts again.



Finish.

104 Type Exchange Dust Tray & Filters

Exchange Dust Tray & Filters to keep the strong suction power.



We recommend you to keep stocks for 1 year usage for your convenience.



Push down the Dust Tray.



Pull the Dust Tray. Throw Away collected dusts.



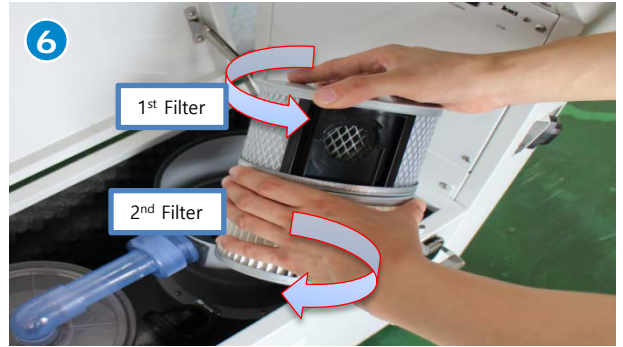
Put it back, match it into hole perfectly.



Open the filter lid.



Detach the Filter by taking it up.



Make 1st and 2nd filters separate by turning left and right.



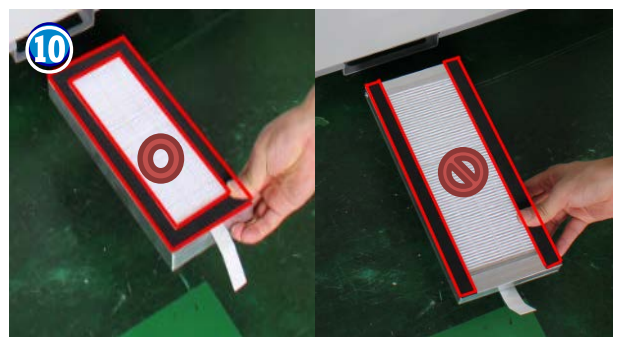
Exchange it with new one.



Match it to the hole again. Cover the lid.



Exchange 3rd filter with new one at the back of Dust Collector.



Make sure the 4 area sponge part is up.

105 Type Exchange Dust Tray & Filters



After turning off the power, lift the handle and discard the cyclone dust bin.



Open the lid of the filter dust collection box.



Loosen the four edge fixing screws.



Separate the bolt and square bundle.



Carefully remove the filter as it is and discard as it is.



Put the air cap between the new filters. Assemble in reverse order.



Open the hooks on both sides of the dust tray below.



After discarding the collected dust, assemble in reverse order.

Notices for Wheel usage

Please follow the below instructions when you use wheel on the Solecheck.



Drive straight as much as possible!



*Drive Slowly!
The max. weight is 2t.*



Do not turn wheel while you stop!


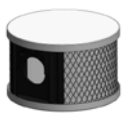


Do not use heavy weight carts!

104 Type

Checklist for Exchange Filter Date

Please make sure the filters are exchanged within 3 ~ 6 months.

*Make sure this Checklist is next to the **Solecheck** and be monitored to replace it timely.*


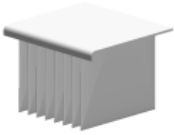

	Dust Tray	1 st Filter	2 nd Filter	3 rd Filter	Check Person
					
Cleaning Date					

105 Type

Checklist for Exchange Filter Date

Please make sure the filters are exchanged within 6 ~ 12 months.

Make sure this Checklist is next to the **Solecheck** and be monitored to replace it timely.

	Cyclone Dust Tray	105 Polyester Filter	Dust Tray	Check Person
				
Cleaning Date				